

DAVID BRAYNE

Brayne



*Jetty* pigment, acrylic and mixed media on paper 32 x 21 cm

DAVID BRAYNE

*Strands*

16 OCTOBER 6 NOVEMBER

  
campden  
gallery

## Strands

David Brayne is an honorary member of the Royal Watercolour Society and winner of the Turner Medal for Watercolour. He makes his paints from raw pigments, luminous ochres, vibrant blues and greens, resonant blacks. His textured surfaces are built slowly with clear glazes and impasto, sometimes drawn into or scratched out. The colours retain their brilliance, and his work is deeply individual. His paintings distil formal and even abstract elements. They are both timeless and contemporary. The critic Nicholas Usherwood describes David's artistic voice as one of quiet and subtle tenderness, placing him in the English tradition of humanistic landscape alongside Richard Eurich.

David's, sea paintings and interiors are both imagined and remembered, simple spaces in which archetypal figures take on visual importance and suggest ambiguous narratives. His childhood home in Lincolnshire looked out on Black Sluice Gate, holding back the tidal waters of the Wash. His mother grew up on Horsey Island, joined to the mainland by a causeway across the Essex salt marsh, the setting for Arthur Ransome's final *Swallows and Amazons* story. He now lives in Somerset between the Mendip Hills and the watery Levels.

JANE WILSON-BRAYNE

'There is poetry of perception expressed in David Brayne's work that is formed by his earlier Minimalist training and his growing Classical concerns. His surfaces are chalky dry, reminiscent of early Renaissance frescos, his colours, while subtly English, invariably have a warm vibrant Italian ochre singing out: creating a perfect harmonious palette.

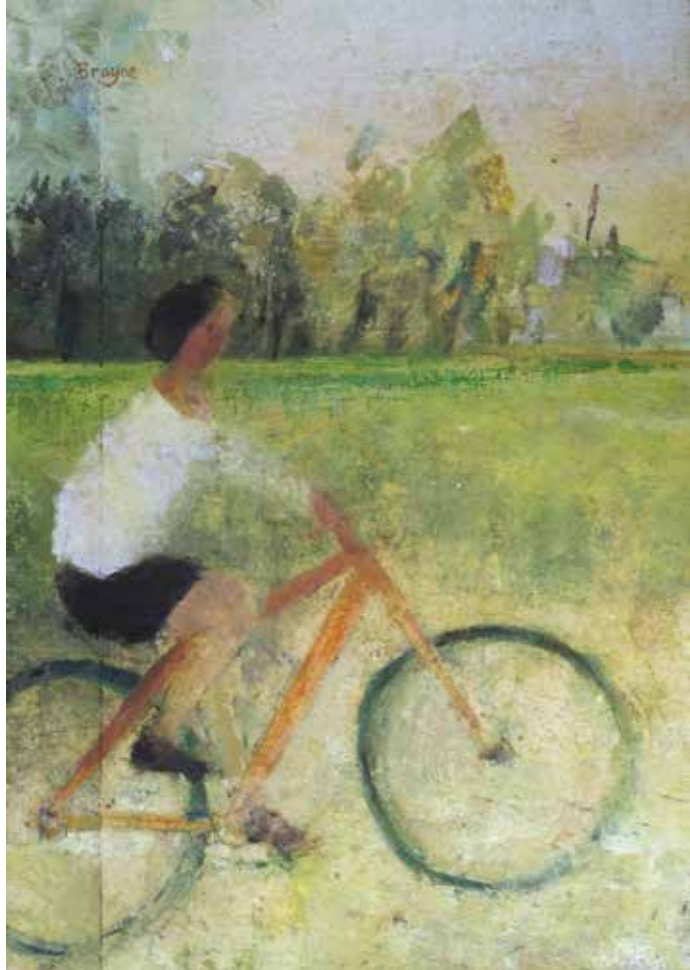
There are no shadows – all as if in a dream- a lyrical memory.'

JEAN FIRMSTONE



*On the Morning Water* pigment and acrylic on paper on board 50 x 65 cm





*Cyclist* pigment, acrylic and mixed media on paper 32 x 21 cm



*Pale Light* pigment, watercolour and acrylic on paper 30 x 32 cm



*Fossil Bay* pigment, watercolour and acrylic on paper 32 x 21 cm

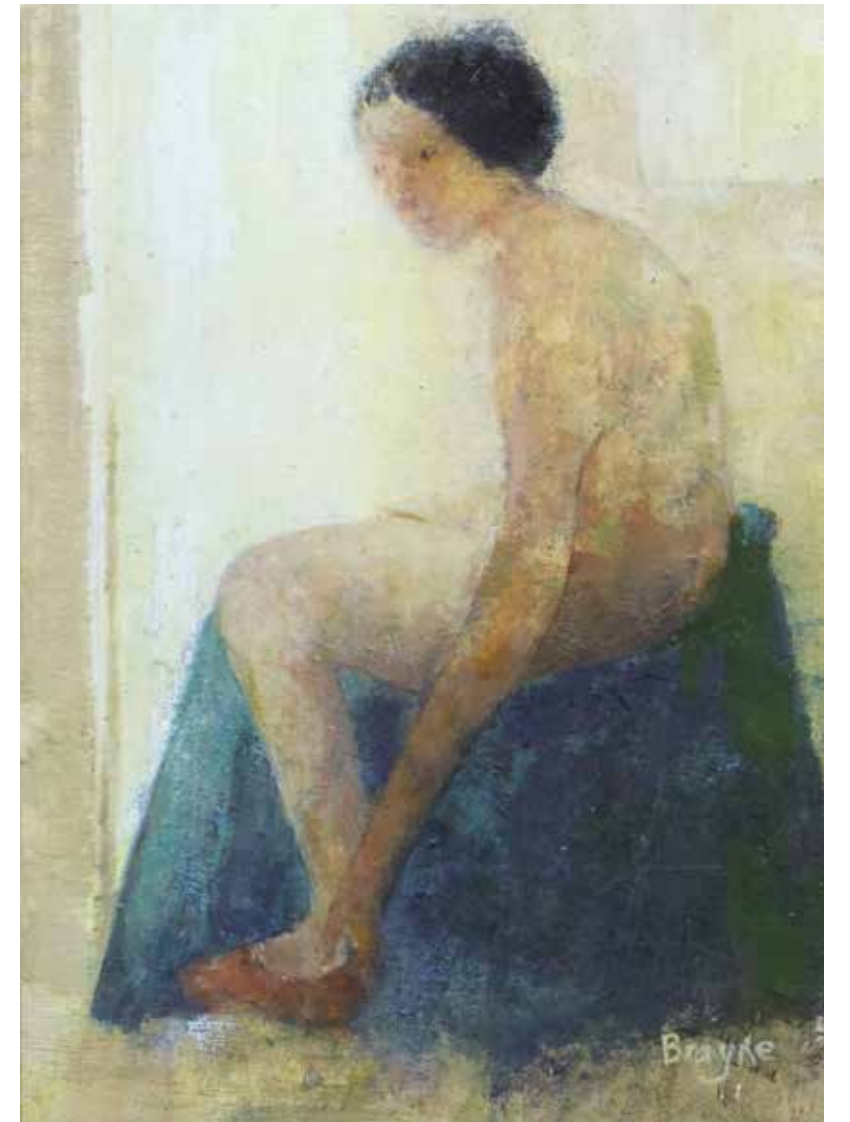


*Three Boats* pigment, acrylic and mixed media on paper 21 x 32 cm





*Start of the Day* pigment and watercolour on paper on board 51 x 63 cm



*Red Shoe, Blue Towel* pigment, acrylic and mixed media on paper 32 x 21 cm



Woodland pigment, acrylic and mixed media on paper 19 x 30 cm



Red Horse pigment, silverleaf and acrylic on paper 19 x 30 cm





*Harbour Wall* pigment, acrylic and mixed media on paper 21 x 32 cm



*Oarsmen* pigment, watercolour and acrylic on paper 38 x 36 cm





*Sea Bathing* pigment, acrylic and mixed media on paper 32 x 21 cm



*West Light* watercolour and pigment on paper on paper 24 x 30 cm



*Loosened Flowers* pigment, acrylic and mixed media on paper 32 x 21 cm

## DAVID BRAYNE

'My morning begins with a walk before I go to the studio, out of the village and along the Alham, a shallow river less than 10 miles long, lying in a green Somerset valley. I don't draw from life but the walk and the time for thinking it allows offer a starting point.'

A regular exhibitor at the Royal Academy Summer Exhibition, David Brayne was awarded the prestigious Turner Medal for Watercolour in 2015 at the Royal Watercolour Society.

The Florence Biennale committee has invited David to exhibit at this year's festival. The festival opens this October.

After studying art at Nottingham School of Art and Gloucestershire College of Art, David later went on to study philosophy at the University of Exeter.

David's work has been exhibited both in solo and group exhibitions in galleries in the UK, Italy, USA and China. It is held in public collections including The Royal Collection; Qingdao Museum, China; The Institute of Modern Art, Mumbai; Cyril Fry; The Royal Watercolour Society; The Ingram collection and in private collections around the world.

First published in 2021 by Campden Gallery Ltd, High Street, Chipping Campden, Gloucestershire GL55 6AG [www.campdengallery.co.uk](http://www.campdengallery.co.uk)

Copyright © 2021 Campden Gallery Ltd ISBN 978-1-908753-72-4

All rights reserved. No part of this publication may be reproduced, stored in a retrieval system or transmitted in any form or by any means electrical, mechanical or otherwise without first seeking the permission of the copyright owners and the publishers.

All images in this catalogue are protected by copyright and should not be reproduced without permission of the copyright holder. Details of the copyright holders are to be obtained from Campden Gallery.

Design by Lyn Davies [www.lyndaviesdesign.com](http://www.lyndaviesdesign.com)

Printed digitally by Park Lane Press on a CO<sub>2</sub> neutral HP Indigo press on FSC® certified paper, power from 100% renewable resources. Print production systems registered to ISO 14001, ISO 9001, and over 97% of waste is recycled.



FRONT COVER  
*Pebble Blue Sea*  
Pigment and acrylic 55 x 58 cm





High Street, Chipping Campden

Gloucestershire GL55 6AG

T 01386 841555

E [info@campdengallery.co.uk](mailto:info@campdengallery.co.uk)

w [campdengallery.co.uk](http://campdengallery.co.uk)